

Year 6 Weekly Homework

Topic: Fairtrade

Your homework is your choice! There are 9 challenges to choose from below. Please try and complete 6 challenges this week.

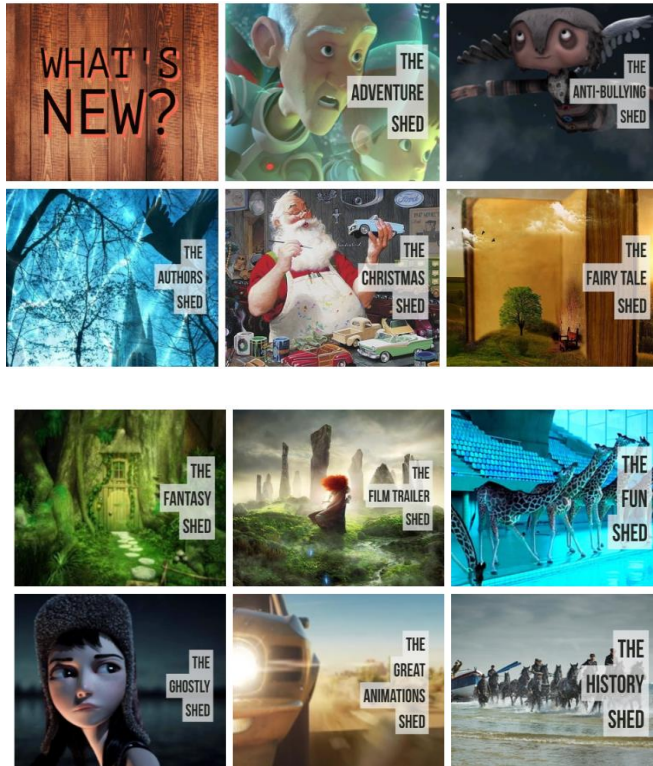
Challenge 1

Literacy

Explore this brilliant website!

<https://www.literacyshed.com/home.html>

Choose one of the 'sheds' from the website to help inspire you to write the beginning of a story. Which genre will you choose?



Challenge 2

Maths-Problem Solving

I collect some shells on the beach.

I multiply the number of shells I have by 7.

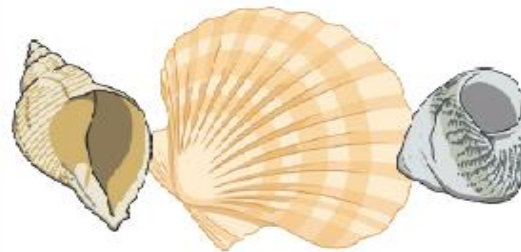
I then subtract 7,

multiply by 9,

and divide by 2.

I end with the number 1953.

How many shells did I collect?



Challenge 3

PSCHE

What are your hopes and dreams for secondary school?


1. What do you hope you will achieve?
2. What kind of person do you hope you will become?
3. Write down three words that you hope people will say about you.
4. Do you have any worries about starting secondary school? How can you overcome them?



Challenge 4

PE

Have a go at this active Monopoly game! Have fun!

REST AND WASH YOUR HANDS	SECONDS 10 HIGH KNEES	SECONDS 20 HIGH KNEES	SECONDS 30 HIGH KNEES	SECONDS 40 BALANCE ON ONE LEG FOR 30 SECONDS	SECONDS 50 HOLD A SMILEY	SECONDS 10 WALL SIT	SECONDS 20 WALL SIT	SECONDS 30 WALL SIT	REST AND WASH YOUR HANDS
SIT UPS X 10	 <div> <p>Rules</p> <ol style="list-style-type: none"> 1. Roll the dice, move your player & complete the activity 2. Every time you pass go you get a point 3. First person to 3 points is the winner <p>Extra Challenge: Can you create your own Active Monopoly using different activities?</p> <div> <div>100</div> <div>500</div> <div>1000</div> </div> <p>Want to make it harder?</p> <ol style="list-style-type: none"> 1. Double the activities in the box 2. Increase the points to win the game <p>Want to make it easier?</p> <ol style="list-style-type: none"> 1. Halve the activities in the box 2. Decrease the points to win the game? </div>							SQUATS X 5	
SIT UPS X 5								SQUATS X 10	
TOUCH YOUR DOOR								HOLD YOUR ARM OUT FOR 30 SECONDS	
BURPES X 10								ARM CIRCLES 10 SECONDS	
BURPES X 5	ARM CIRCLES 20 SECONDS								
REST AND WASH YOUR HANDS	PRESS UPS X 10	PRESS UPS X 5	PRESS UPS X 3	MOVE FORWARD 3 SPACES	3 STAR JUMPS IN YOUR ROOM	STAR JUMPS X 10	STAR JUMPS X 5	GO	

Challenge 5

Maths

Place Value

Round 12 674 to the nearest ten.



Fractions

Convert this mixed number into an improper fraction:

$$5 \frac{1}{2} = \frac{11}{2}$$

Problem Solving

Complete this calculation:

$$3.8 + 0.27 = \text{ice cream bucket} - 1.3$$

+ and -

$$26\,940 + 600 = \text{strawberries}$$

$$10\,000 - 2800 = \text{flower}$$

× and ÷

Use a written method to solve this calculation:

$$3563 \times 5 = \text{ice cream cone}$$

Reasoning

An angle measuring 205° is a reflex angle.

Is Jamil correct? Explain your reasoning.



Challenge 6

Geography -Fairtrade

- What is a continent?
- Can you name all of the 7 continents?
- Which continents do Fairtrade products come from?
- Do you notice a pattern? Why might this be?



Challenge 7

Science

Try one (or both) of these egg experiments!



Make some dragon eggs!

1. **With help from an adult** hard-boil some eggs.
2. Let them cool and then roll them on the work-surface to crackle the shell all over.
3. Half-fill some cups with water and mix in a good dollop of food colouring into each cup (the gel pastes work best).
4. Pop an egg into each cup and leave in the fridge overnight.
5. Peel off the shell and you'll see that the dye is taken up wherever the shell is cracked.

Take a picture of your finished result and post it into your portfolio!

Can an egg float?

Place an egg in a glass of water.

What happens?

Now stir in lots of salt and try again.

What happens now?

Can you explain why there is a change?

Challenge 8

Literacy-SPaG

Which sentence is written in Standard English?

Tick **one**.

I went to the library and done my homework. ☐

They seen their friends at the cinema. ☐

I been to the circus with my aunt and uncle. ☐

I sang with the school choir in the concert. ☐

Circle the two words that show the **tense** in the sentence below.

They went to the theme park – the car journey home was difficult.

Rearrange the words in the statement below to make it a **question**.
Use only the given words.
Remember to punctuate your sentence correctly.

Statement: They are listening to music.

Question: _____

Challenge 9

Music

Research a famous composer and listen to their music.

Which piece of music did you enjoy listening to and why?

How would you describe their style of music?